



Palm Beach State College District Board of Trustees Meeting

October 15, 2024

KNOWLEDGE IS
FOREVER



**Palm Beach State College
District Board of Trustees Meeting**



Lake Worth Campus Update

Ms. Barbara Cipriano

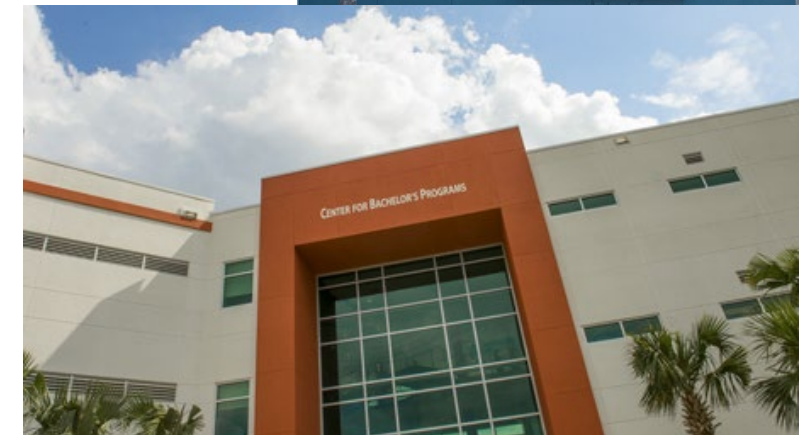
Provost & Dean

October 15, 2024



Lake Worth Campus Fun Facts

- Largest Campus (114 acres) 61 Buildings
- 797+ employees
- Public Safety, Trades & Nursing (main location)
- Duncan Theater
- Athletics Complex
- YMCA Wellness Center Partner
- Palm Beach Preparatory Charter Academy – lease
- Bookstore, Café and Dunkin Donuts





Opportunity awaits...



Next Major Project – LIBRARY renovation
Phase II Panther Plaza entry
Athletic Complex redesign & expansion project



Busy, Busy, Busy!





Video LW Tour



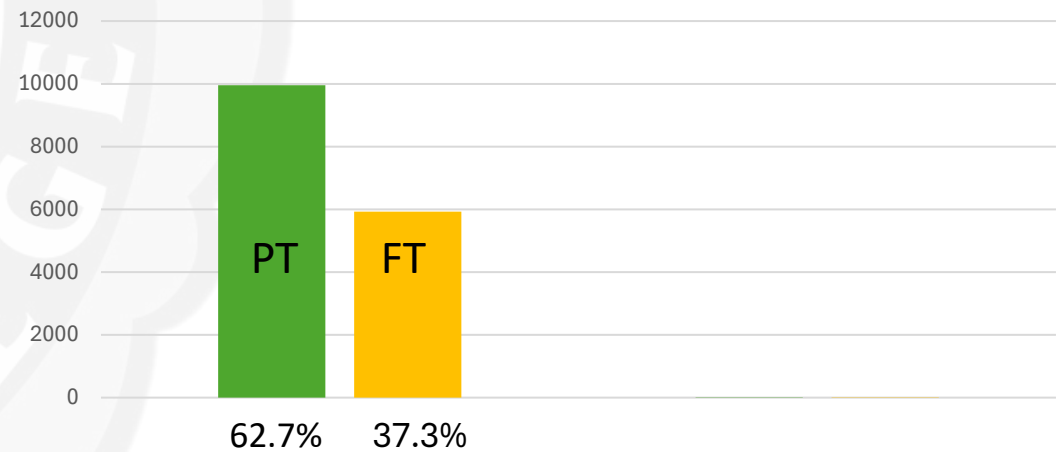
[LW Provost Campus Tour - Palm Beach State College - Instructional Technology \(kaltura.com\)](#)



Our Lake Worth Students: 15,889 Strong



Day students	7,166	46.8%
Evening students	2,563	16.7%
Day/evening	1,513	9.9%
* Uncategorized	4,082	26.6%





Our Student's ages...

Under 18	1,145	7.2%
18 to 19	4,536	28.5%
20 to 21	2,989	18.8%
22 to 24	2,326	14.6%
25 to 29	1,817	11.4%
30 to 34	1,113	7.0%
35 to 44	1,200	7.6%
45+	753	4.7%
Average age	24.4	
Median age	21.0	



7 Feeder High Schools:

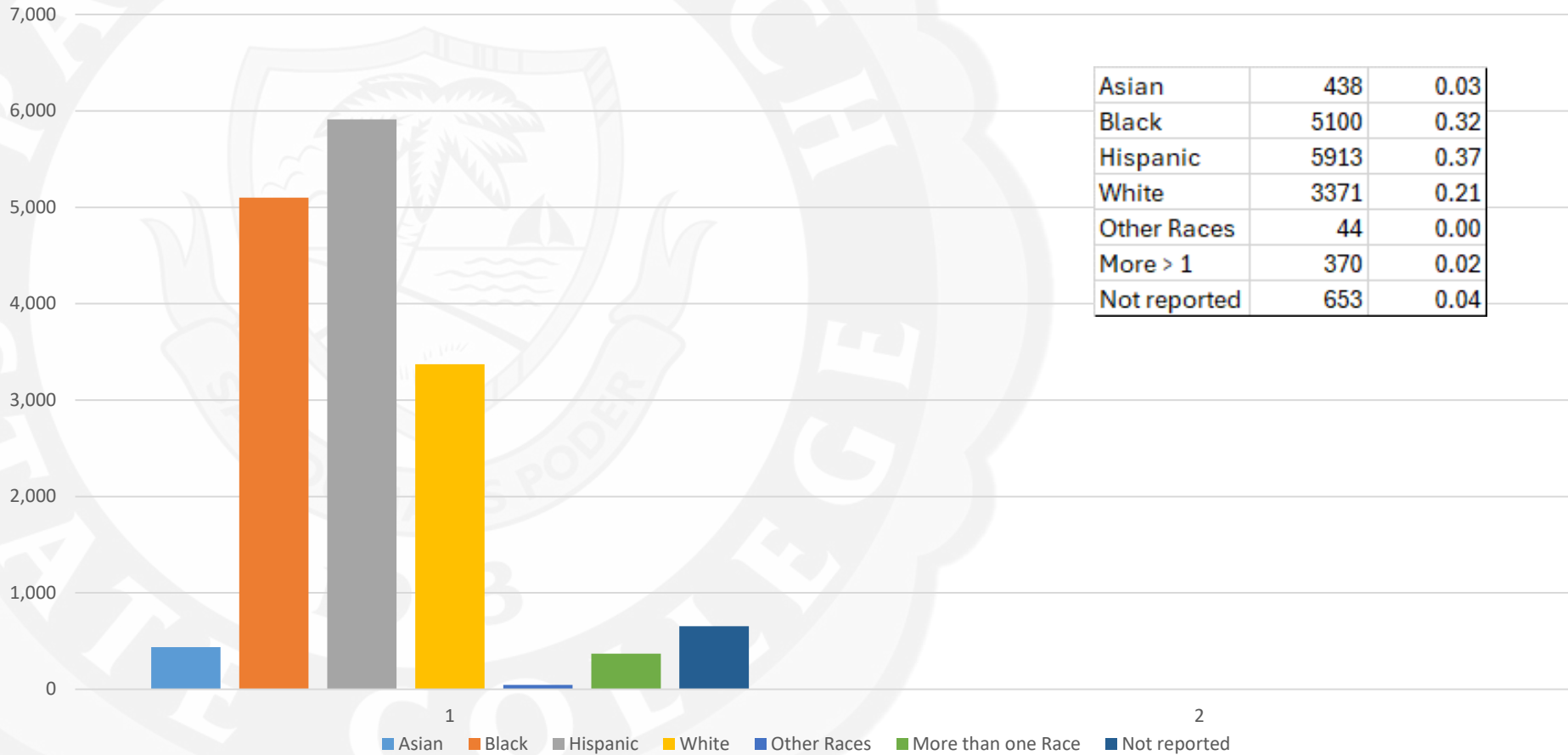
Lake Worth HS
 John I Leonard HS
 Dr. Joaquin Garcia HS
 Dreyfoos School of the Arts HS

Forest Hill HS
 Santaluces HS
 Park Vista HS



Our Student's are...

Race and Ethnicity





Students are Studying...

Baccalaureate Programs	• 1278	7.2%
Associate in Arts	• 8954	56.4%
Associate in Science	• 2471	15.6%
College Credit Certificate	• 359	2.3%
Career Certificate Program	• 829	5.2%
Apprenticeship	• 78	0.5%
Dual Enrolled or Early Admission	• 1138	7.2%
Transient Students	• 58	0.4%



Modality of Learning

All in-person/hybrid classes	5,748	36.2%
Mix in-person/online classes	3,116	19.6%
All fully online/live online classes	7,025	44.2%
Total course enrollments	31,902	
Face-to-face, in-person	17,306	52.1%
Fully online	8,576	25.8%
Hybrid	1,477	4.4%
Live online	6,050	19.0%

↑ Up from 2023
15,794 – 49.2%



Questions?

Thank-You!



Palm Beach State College District Board of Trustees Meeting

October 15, 2024

KNOWLEDGE IS
FOREVER



**Palm Beach State College
District Board of Trustees Meeting**



Lake Worth Campus New Faculty

Ms. Susan Bierster

Dean of Academic Affairs

October 15, 2024



Professor John Normandin, Music



South Florida native, born and raised in Hialeah, FL where he learned to play the trombone in the public school system.

Received his AA degree from Broward College; Bachelor's in Music Education and Masters of Music in Jazz Performance from FIU.

Doctoral Candidate of Musical Arts in Jazz Performance at University of Miami.

Band Director for middle school in Hialeah for 19 years. His bands consistently earned Superior ratings at FBA Music Performance Assessments.

Adjunct professor for 12 years at Miami-Dade College directing the Jazz Ensemble and Low Brass Studio.

His love for music extends beyond the classroom and you can find him performing around the South Florida tri-county area playing Classical, Jazz, Compa and Salsa.



Professor Erika Locke-Williams, Music



Native of West Palm Beach and it was from her parents that she developed and nourished her talent as a musician.

Bachelor of Science in Music Education from Florida A&M.

Master of Music Education as a vocal and piano major from FSU.

Specialist Degree in Educational Leadership and doctoral students from Nova Southeastern Univ.

Middle School chorus, orchestra and band teacher both in Florida and Georgia.

Locally she has taught and Directed Bands and Choral at Lake Worth Middle School and UB Kinsey Elementary School.

Began as an adjunct at Palm Beach State College in 2006 at the Palm Beach Gardens campus. She has also taught for Miami Dade College and Barry University.

She is a piano, voice and band instructor for Faith's Place Center for the Arts. Serves on the board for the Young Singers of the Palm Beaches, the Youth Orchestra of Palm Beach County and VP of the CamAnaiStrings, Inc. Foundation.



Professor Ashley Ferguson, Mathematics



Born in South Florida but raised in Port Charlotte, Florida.

Master of Science in both Applied Mathematics and Chemical Engineering from Florida Institute of Technology.

Co-authored a paper that was published in Chemical Engineering Science. The topic was on her graduate research study the transport properties of random bimodal and multimodal fiber structures.

Bachelor of Science from FIT in Mathematical Sciences and Chemical Engineering.

Before coming to PBSC Professor Ferguson was a Senior Instructor of Mathematics at University of South Carolina Beaufort. She taught a variety of undergraduate math and physics courses. In addition, she was involved in creating the undergraduate degree program for mathematical sciences.

Outside of teaching, Professor Ferguson is involved in musical theatre productions, wind ensembles and jazz groups as part of the clarinet and saxophone sections.



Professor Lulu Abukhalil, Mathematics



Master of Science in Math Education from Nova Southeastern University.

Bachelor of Science in Secondary Mathematics Education from Indian River State College.

For the past 13 years was a math tutor in the Student Learning Center at Palm Beach Gardens campus.

Former Professor Christine Bush was her inspiration and motivator to complete both her bachelor's and master's degree.

Finds immense joy in simplifying complex concepts and helping students overcome their fear of math.

Her major milestone was earning her Master's while being a Mom to 4 children and working at PBSC's SLC.



Dr. John DeStefano, Biology



Born and raised in Long Island but settled in South Florida when he began his medical practice.

Earned his AA degree from Suffolk County Community College

Bachelors of Science in Biology at Stonybrook

Doctor of Podiatric Medicine from California College of Podiatric Medicine.

Had 33-year career as a licensed Doctor of Podiatric Physician and Surgeon in Palm Beach County.

Adjunct professor at PBSC since 2017. Temporary full-time faculty for almost 2 years before becoming permanent full-time faculty.

His ability to connect academics with real life applications makes him highly effective in the classroom.

His love for teaching comes out clearly when teaching science labs where he can provide hands-on teaching and learning.

Loves to cook, fix things in his garage and in the lab and frees his mind by getting out on his motorcycle.



Palm Beach State College District Board of Trustees Meeting

October 15, 2024

KNOWLEDGE IS
FOREVER



PALM BEACH STATE COLLEGE

**Palm Beach State College
District Board of Trustees Meeting**



The Economic Value of PBSC

Mr. Dave Weber

**Executive Director
Planning, Research, and Effectiveness**

October 15, 2024

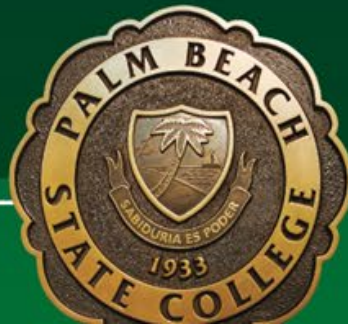


MISSION

Palm Beach State College advances the economic and social growth of our community and global workforce through innovative, high-quality learning experiences that transform students' lives.

VISION

PBSC is our community's first-choice college. We commit to every learner's success by fostering excellence, cultivating dynamic collaborations, and leveraging new technologies.





Lightcast and Community Colleges

- 20+ years working with higher education institutions
- 3,000+ economic impact studies completed
- 2.7M students used Lightcast's Career Coach tool in 2023
- 8 of 10 2023 Aspen Prize finalists are Lightcast customers
- Produced PBSC's 2018 Economic Impact Report
- Works with the College in several ways including Analyst, Career Coach, and Alumni Outcomes



Total Impact

In FY 2022-23, PBSC added **\$1.4 billion** in income to the Palm Beach County economy, a value approximately equal to **1.2%** of the county's total gross regional product (GRP).



Job Impact

Expressed in terms of jobs, PBSC's impact
supported 18,187 jobs.

For perspective, the activities of PBSC and its students support one out of every 63 jobs in Palm Beach County.



Impact Summary

If the College did not exist
these impacts would not
have been realized.

\$176.1 million
Operations Spending Impact

\$44.5 million
Student Spending Impact

\$1.2 billion
Alumni Impact

\$1.4 billion
Total Impact

or

18,187
Jobs Supported



ECONOMIC IMPACT ANALYSIS

Operations Spending Impact -

Total payroll at PBSC was \$133.6 million, much of which was spent in the county for groceries, mortgage and rent payments, dining out, and other household expenses. In addition, the college spent **\$68.7 million on expenses** related to facilities, supplies, and professional services.

Student Spending Impact -

Around 12% of students attending PBSC originated from outside the county in FY 2022-23, and some of these students relocated to Palm Beach County to attend PBSC. While attending the college, these relocated and retained students spent money on groceries, accommodation, transportation, and other household expenses. **This spending generated \$44.5 million** in added income for the county economy.

Alumni Impact –

As a result of their education from PBSC, the students receive higher earnings and increase the productivity of the businesses that employ them. In FY 2022-23, **PBSC alumni generated \$1.2 billion in added income** for the county economy, which is equivalent to supporting 14,484 jobs.



ECONOMIC IMPACT ANALYSIS

Total Impact -

PBSC added \$1.4 billion in income to the Palm Beach County economy during the analysis year, equal to the sum of the operations spending impact, the student spending impact, and the alumni impact. For context, the \$1.4 billion impact was equal to approximately **1.2% of the total gross regional product (GRP)** of Palm Beach County.

Total Impact = 1.4 Billion



Student Investment Analysis

In FY 2022-23, PBSC served **34,573 credit and 3,753 non-credit students**. In order to attend the college, the students paid for tuition, fees, books, and supplies.

The total investment made by PBSC's students in FY 2022-23 amounted to a present value of **\$113.5 million**, equal to \$65.6 million in out-of-pocket expenses and \$47.9 million in forgone time and money.

STUDENT PERSPECTIVE

\$731.7 million
Present value benefits

\$113.5 million
Present value costs

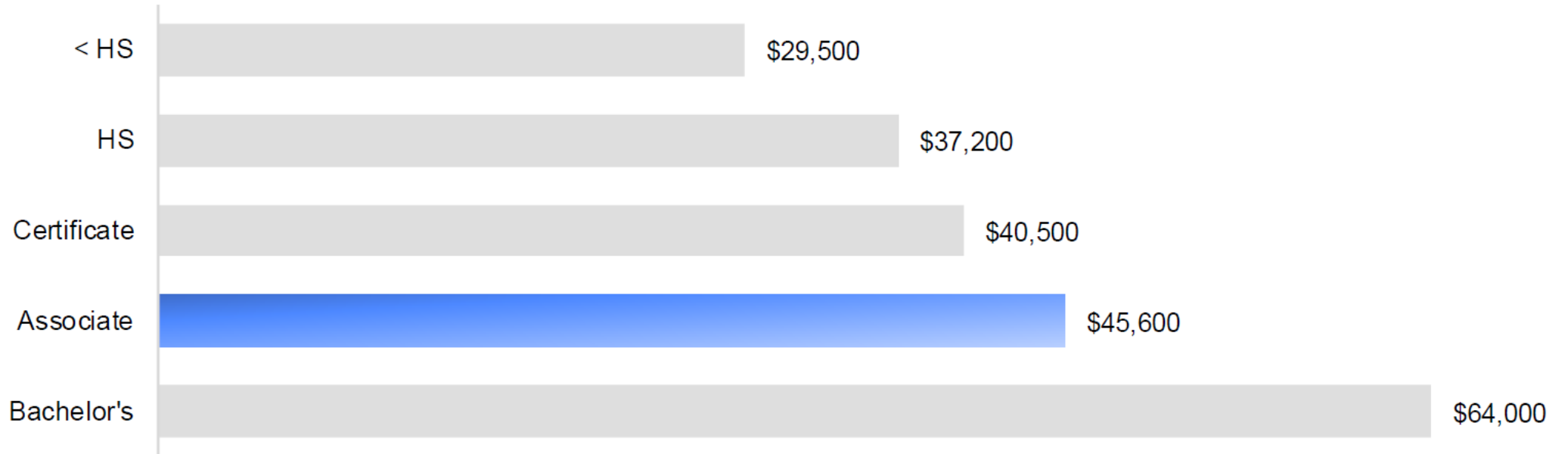
\$618.2 million
Net present value

6.4
Benefit-cost ratio

21.7%
Rate of return



Student Investment Analysis



The average PBSC associate degree graduate from FY 2022-23 will see annual earnings that are **\$8,400 higher** than a person with a high school diploma or equivalent working in Florida.

Over a working lifetime, the benefits of the associate degree over a high school diploma will amount to an undiscounted value of **\$344,000 in higher earnings** per graduate.

The present value of the cumulative higher future earnings that PBSC's FY 2022-23 students will receive over their working careers is **\$731.7 million**.



Taxpayer Perspective

For every dollar of public money invested in PBSC, taxpayers will receive a cumulative value of **\$2.90** over the course of the students' working lives.

TAXPAYER PERSPECTIVE

\$255.4 million
Present value benefits

\$88.0 million
Present value costs

\$167.4 million
Net present value

2.9	7.6%
Benefit-cost ratio	Rate of return



Social Perspective

SOCIAL PERSPECTIVE

\$3.8 billion

Present value benefits

\$291.1 million

Present value costs

\$3.5 billion

Net present value

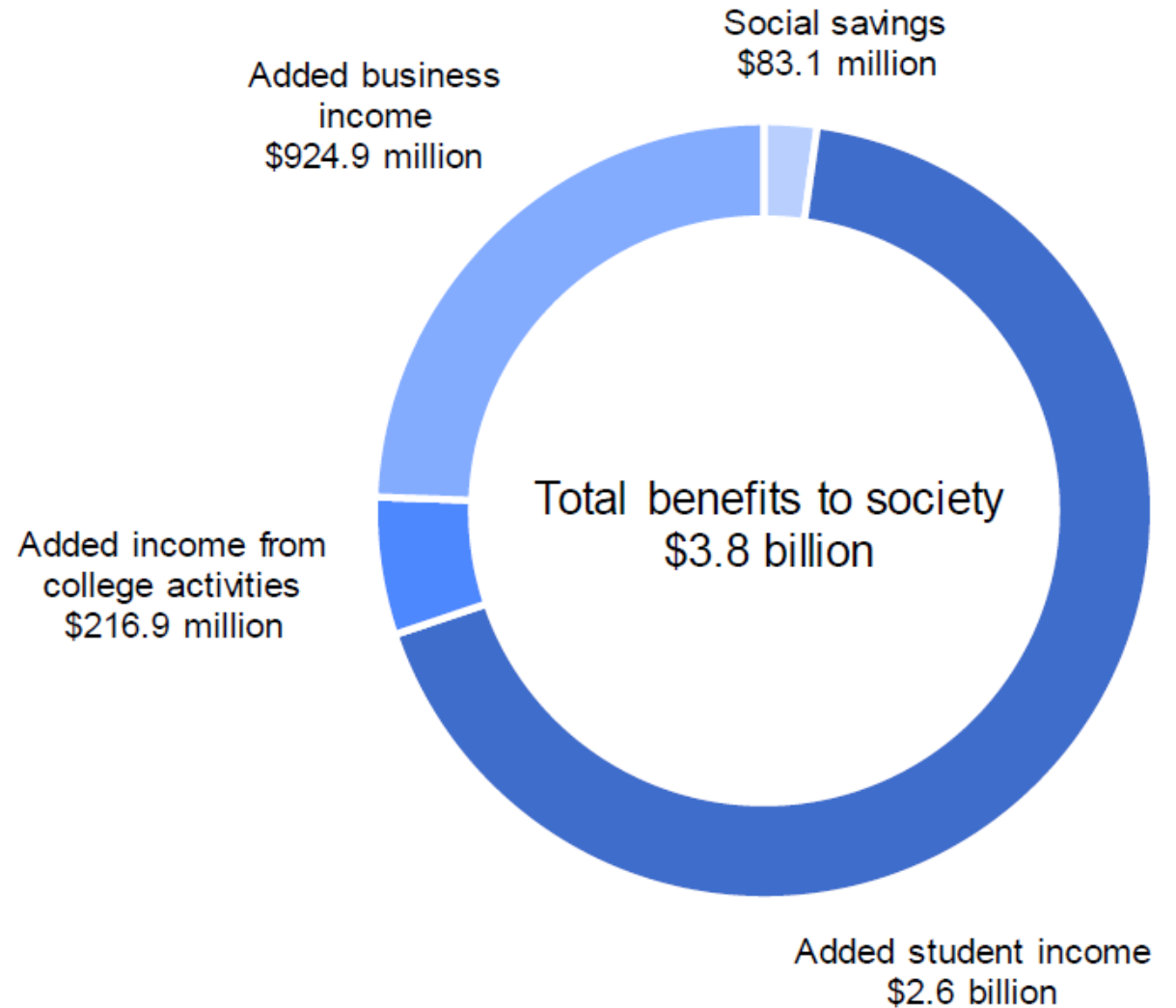
13.0

Benefit-cost ratio

n/a*

Rate of return

* The rate of return is not reported for the social perspective because the beneficiaries are not necessarily the same as the original investors.





Summary of Value

Palm Beach State College creates added value that generates a positive return on investment impacting the lives of its students, alumni, taxpayers, its diverse industries, society, and the county's economy providing benefits and opportunities for all.



Q & A



QUESTIONS



Palm Beach State College District Board of Trustees Meeting

October 15, 2024

KNOWLEDGE IS
FOREVER



**Palm Beach State College
District Board of Trustees**



Lake Worth Campus – Sports Master Plan

Mr. Kirk Stetson

Manager, Facilities Planning & Construction

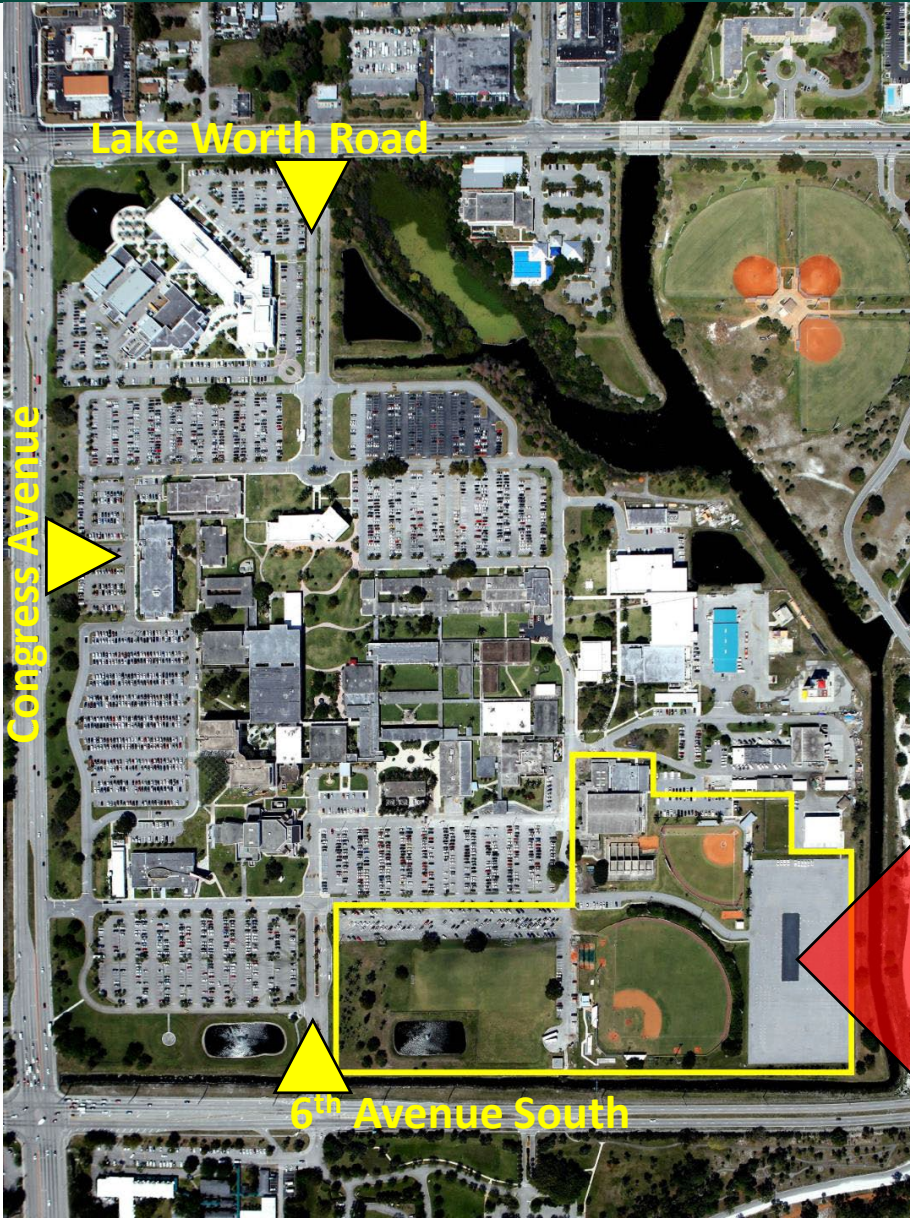
Mr. John Scarpino

Director, Athletics

October 15, 2024



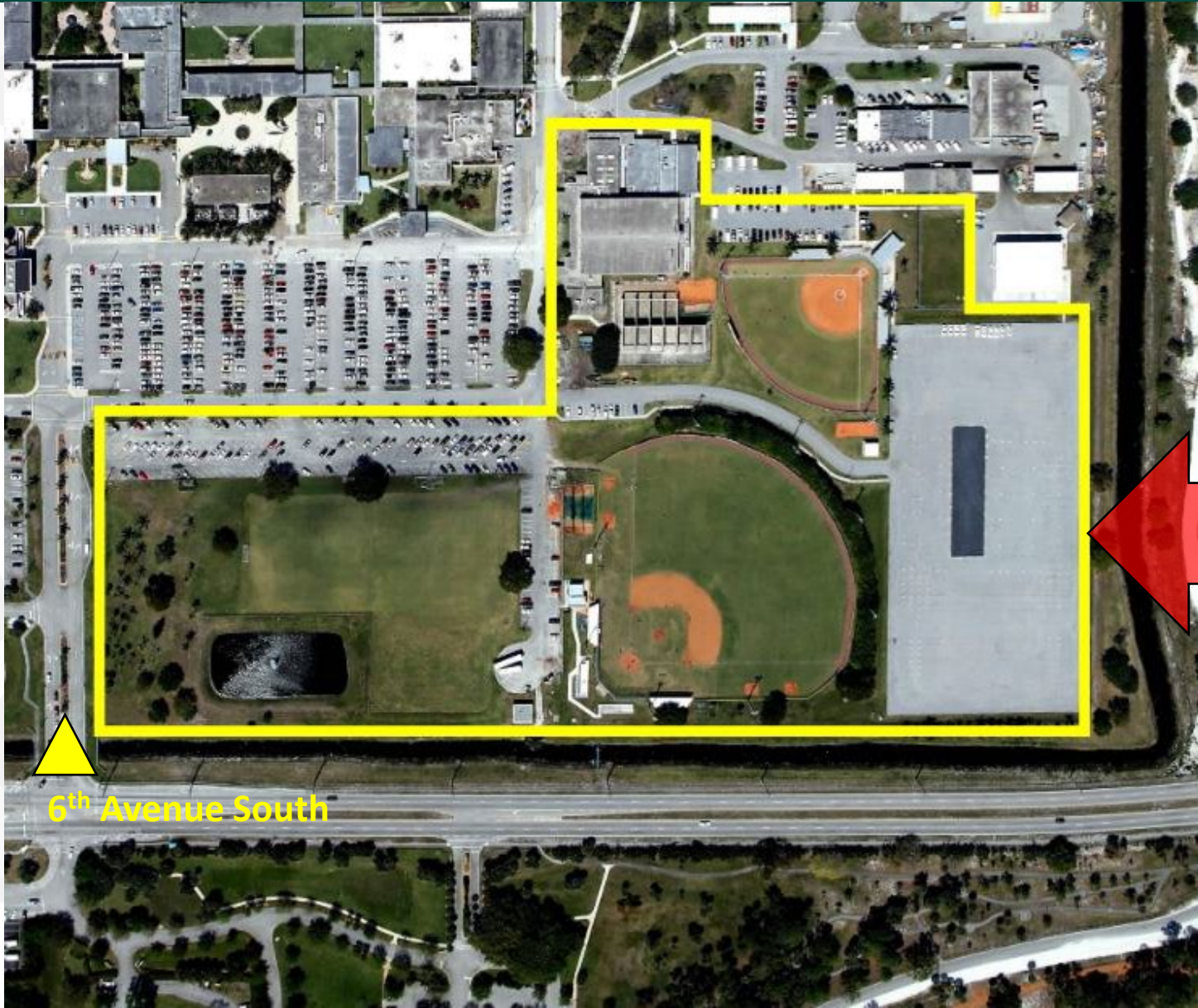
LW Campus AERIAL Photo - Orientation



STUDY AREA
Lake Worth Sports
Master Plan



Aerial Photo – Enlarged Site Study Area

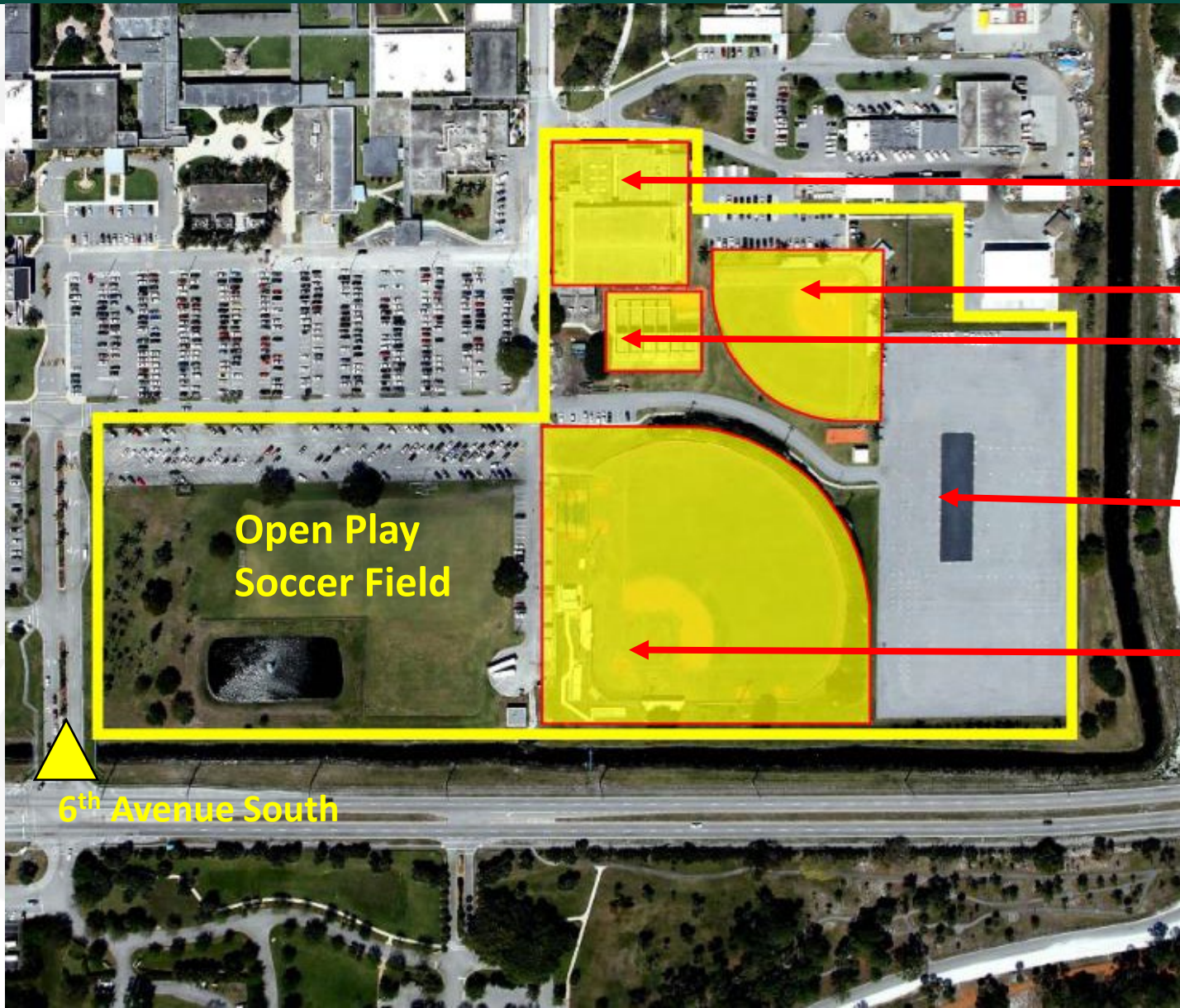


STUDY AREA
Lake Worth Sports
Master Plan

6th Avenue South



Aerial Photo – Existing Sports Elements



Gymnasium

Softball (Discontinued)

Racquetball Courts

Skid Pad

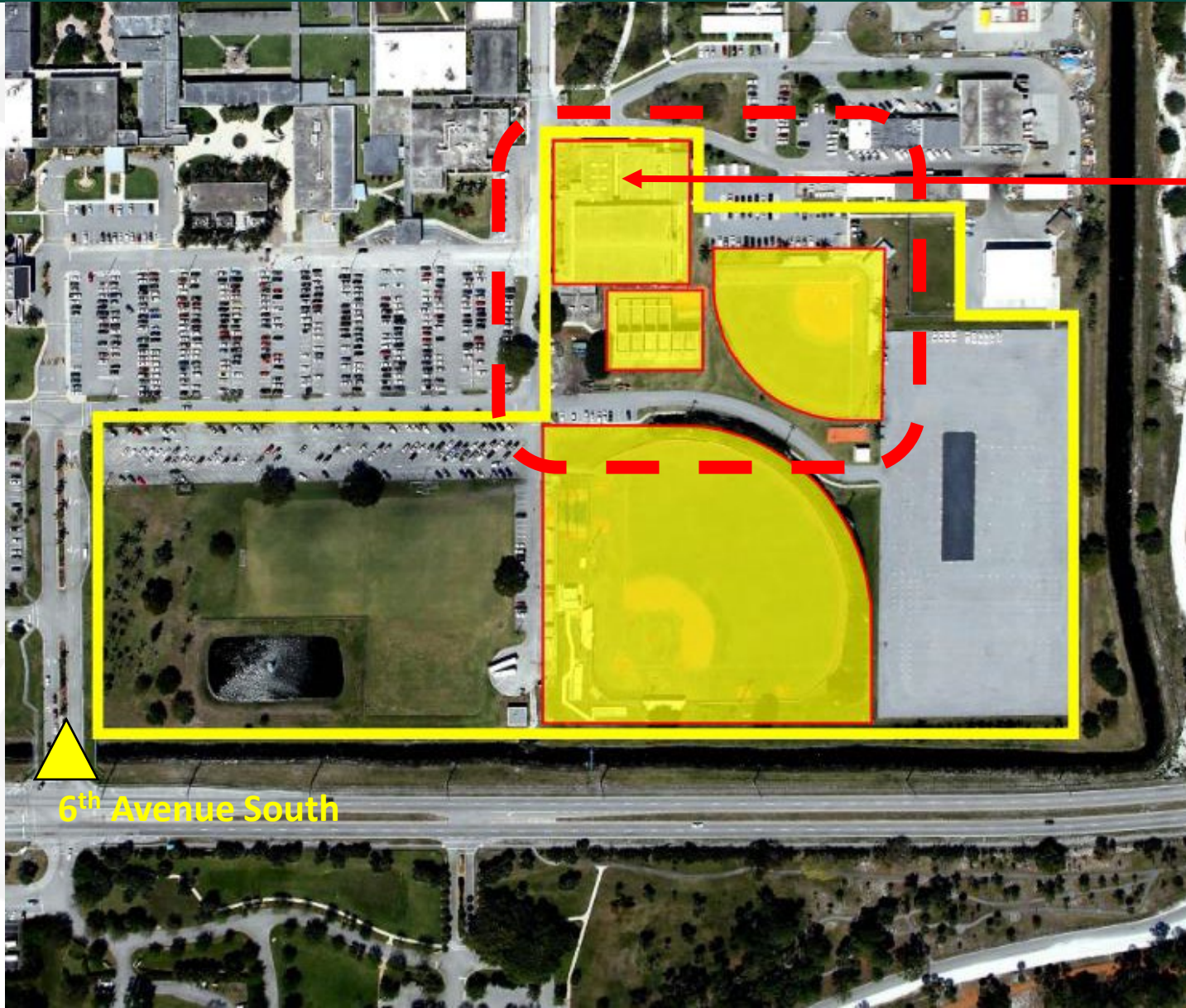
Baseball

**Open Play
Soccer Field**

6th Avenue South



Aerial Photo – Historical Reference



Gymnasium

6th Avenue South



Aerial Photo – Historical Reference

1956-Field House





Aerial Photo – Historical Reference

1956-Field House



1959-Half Gym





Aerial Photo – Historical Reference

1956-Field House



1959-Half Gym



1964-Half Gym



Lockers, Offices





Aerial Photo – Historical Reference

1956-Field House



1959-Half Gym



1964-Half Gym
Lockers, Offices

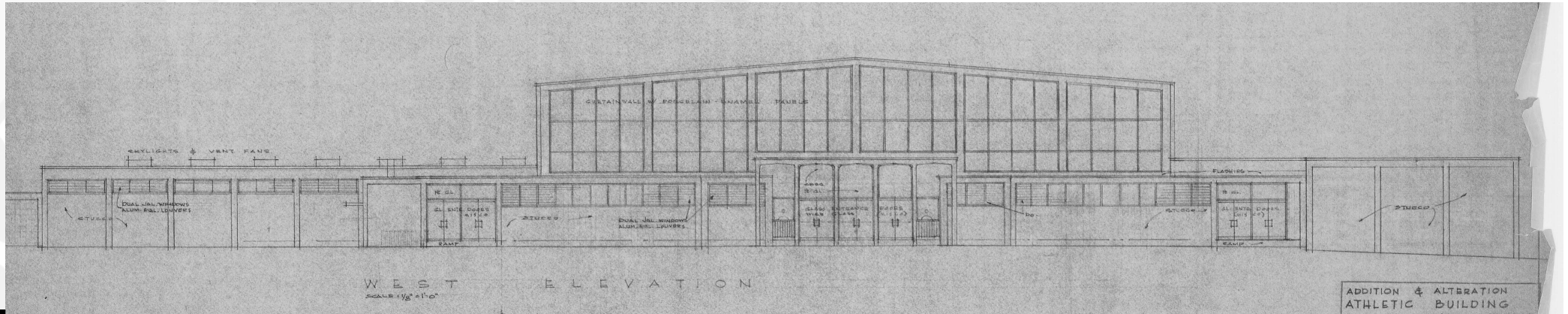


1976-Racquetball





Lake Worth Gym – Yesterday and Today



1964

2024





Lake Worth Campus 5-Year Master Plan

LAKE WORTH CAMPUS | MASTER PLAN



- NEW BUILDING / SITE CONSTRUCTION
- REMODELING / RENOVATION
- EXISTING BUILDING
- FUTURE BUILDING
- DEMOLISHED BUILDING

NEW BUILDING / SITE CONSTRUCTION

- 01** NEW STUDENT SERVICES BUILDING
20,500 SF / FLOOR
4 FLOORS
82,000 SF TOTAL
- 02** LL113 LIBRARY BUILDING ADDITION
1,230 SF PER FLOOR
3 FLOORS
3,690 SF TOTAL
- 03** NEW SOCCER FIELD
- 04** AU 131 DUNCAN B. WATSON THEATRE ADDITION
2 FLOORS
17,221 SF TOTAL
- 05** NEW 6TH AVENUE GATEWAY
NEW ENTRANCE ROAD, SIGNAGE, ROADWAY IMPROVEMENTS, PLAZA, MASCOT SCULPTURE, CORNER MONUMENTS, PARKING, LIGHTING, LANDSCAPING & RETENTION AREAS

REMODELING / RENOVATION

- 06** LL113 LIBRARY BUILDING
ALL 3 FLOORS REMODELING / RENOVATION
44,061 SF TOTAL
- 07** AU131 DUNCAN B. WATSON THEATRE
2 FLOOR REMODELING / RENOVATION
20,300 SF TOTAL
- 08** TC117 TECHNICAL CENTER
CENTER FOR TEACHING & LEARNING
REMODELING / RENOVATION
SECOND FLOOR - SOUTH END
7,597 SF TOTAL
- 09** TC117 TECHNICAL CENTER
STUDENT LEARNING CENTER
REMODELING
SECOND FLOOR - NORTH END
6,861 S.F. TOTAL
- 10** ETA128 EDUCATIONAL TRAINING CENTER A
MEDICAL SIMULATION CENTER
REMODELING
2ND FLOOR - 6,861 S.F. TOTAL
- 11** ETD158 EDUCATIONAL TRAINING CENTER D
2ND FLOOR COSMETOLOGY
REMODELING
6,861 S.F. TOTAL
- 12** CF105 CAFETERIA
NEW STUDENT WELCOME CENTER & CAFETERIA DINING
1ST FLOOR - REMODELING / RENOVATION - 4,848 S.F. TOTAL
- 13** PE102 P.E. / GYMNASIUM
GYMNASIUM & CLASSROOM
RENOVATION
1ST FLOOR - 18,999 S.F. TOTAL
- 14** FT202 FITNESS CENTER
STAFF OFFICES REMODELING
1ST FLOOR - 1,812 S.F. TOTAL
- 15** PG104 PAUL GLYNN BUILDING
STAFF OFFICES REMODELING
1ST FLOOR - 8,393 SF TOTAL
- 16** SCA201 SCIENCE BUILDING A
CULINARY KITCHEN RENOVATION
1ST FLOOR - 2,577 SF TOTAL
- 17** HU120 HUMANITIES BUILDING
GALLERY AND BLACK BOX
REMODELING / RENOVATION
1ST T FLOOR
2,800 SF TOTAL
- 18** AD111 ADMINISTRATION BUILDING
ADMIN., LOBBY, DATA, OFFICE
REMODELING / RENOVATION
1ST FLOOR - 1,020 SF TOTAL
- 19** CJB107 CRIMINAL JUSTICE B
STAFF OFFICES REMODELING
1ST FLOOR - 1,557 SF TOTAL
- 20** CJD507 CRIMINAL JUSTICE D
STAFF OFFICES REMODELING
1ST FLOOR - 2,845 SF TOTAL
- 21** PSD540 PUBLIC SAFETY TRAINING CENTER D
EMT LAB WITH TESTING ROOMS
REMODELING
1ST FLOOR - 2,464 SF TOTAL

FUTURE BUILDINGS

- F1** FACILITIES STORAGE BUILDING
4,800 SF TOTAL
- F2** CLASSROOM, VOCATIONAL SPACE
3 FLOORS
45,000 SF TOTAL
- F3** GENERAL CLASSROOM BUILDING
3 FLOORS
64,000 SF TOTAL





Study – Sports Master Plan – 2023

Recommended **PRIORITIES** for the Master Plan

1. **ADD Beach Volleyball (18 Courts)**
2. Reorient/Rebuild a **NEW Baseball Field**
3. **ADD (2) Practice Pitches + Future Soccer Stadium**
4. **ADD NEW Field House**



Study – Sports Master Plan – 2023





Phase 1 – Beach Volleyball – 2024-2025





Phase 1 – Beach Volleyball – 2024-2025

Benefits of Beach Facility

- Community Engagement
- Partnerships with the Sports Commission and other County Entities
- Generating Revenue source for the College
- Statewide and National Exposure
- Expand the reach of the college
- Meets the needs of the two-time defending National Champion Panthers



PHASE 1 – Beach Volleyball – 2024-2025

Possible Facility Event Usage

- High Schools
 - Work with the School District for practice and game times
 - FHSAA State Championship
- Clubs and organizations
 - USA Volleyball Juniors/Amateur Adult
 - AAU
- College Events
 - NJCAA State and National Championship
 - NCAA and NAIA Tournaments, Regional and National Championship Events
- Professional Events
 - American Volleyball Professional League
 - Tour events



Other local Beach Volleyball Facilities



FAU – 5 Courts, No Lights
PBAU – 3 Courts, Lights





Other local Beach Volleyball Facilities



**Delray Public Beach
9 Courts, No Lights**



QUESTIONS ???



Palm Beach State College District Board of Trustees Meeting

October 15, 2024

KNOWLEDGE IS
FOREVER



**Palm Beach State College
District Board of Trustees Meeting**



Final 2024 Legislative Update

Ms. Abby Ross

**Executive Director & Special Assistant to
the President**

October 15, 2024



HB 149 – Construction Continuing Contracts

- Revises the maximum estimated construction cost for projects that governmental entities can enter into under continuing professional services contracts (from \$4M to \$7.5M). Professional services include architectural, engineering, construction management, surveying.
- Increases efficiency in delivering capital projects, reduces procurement times by 4-6 months for many projects.



HB 151- Florida Retirement System (FRS)

- Increases certain contribution rates, paid by employer, beginning July 1, 2024, to the FRS.
- **This is to help fund the unfunded actuarial liability.**
- 3% employee contribution rate not affected.
- Authorizes an FRS retiree to be re-employed with an FRS employer and receive compensation/retirement benefits after six months (formerly one year).



SB 818 – Military Leave

- Entitles state, county, municipality, or political subdivision officials and employees to full pay for the first 30 days of military leave for active federal service exceeding 90 consecutive days.
- Mandates the continuation of health insurance and other benefits as required by the Uniformed Services Employment and Reemployment Rights Act.
- **PBSC's military leave policy is 30 days paid adopted by the DBOT in May 2024.**



HB 1285 – Education

- Authorizes associate in arts specialized transfer degrees, detailing the approval process and degree requirements.
- **Removes financial aid barrier previously in place.**
- The creation of Associate in Arts Specialized Transfer Degrees will allow FCS institutions to build SUS program prerequisites into the graduation requirements for these specialized Associate in Arts degrees and place FCS students on equal footing with native SUS students who are in STEM pathways with respect to federal financial aid eligibility.



HB 1285 – Education

- Repeals the Florida College System institution employment equity accountability program.
 - including removal of the requirement for the district board of trustees to evaluate a president based on the results of the equity report and the requirement of the president to submit the institution's employment equity plan to the Florida Department of Education
- Allows for a single document (formerly two) to prove in-state residency for tuition purposes, based on a list of accepted documents.



HB 7007 – OSGR/Campus Emergency Response

- Makes a permanent public records exemption to the state’s “Open Government Sunset Review Act”.
- Post-secondary institutions develop campus emergency response plans for potential acts of terror, public safety or other emergencies. A campus emergency response includes evacuation plans, shelter arrangements, vulnerability analyses and identification of certain students/staff.
- This aims to protect sensitive information that, if disclosed, could potentially be misused or compromise campus security.
- **PBSC is updating our Emergency Operations Plan (EOP) & Continuity of Operations Plan (COOP) as required by state law (due by 12/31/24) to DOE/FDEM.**

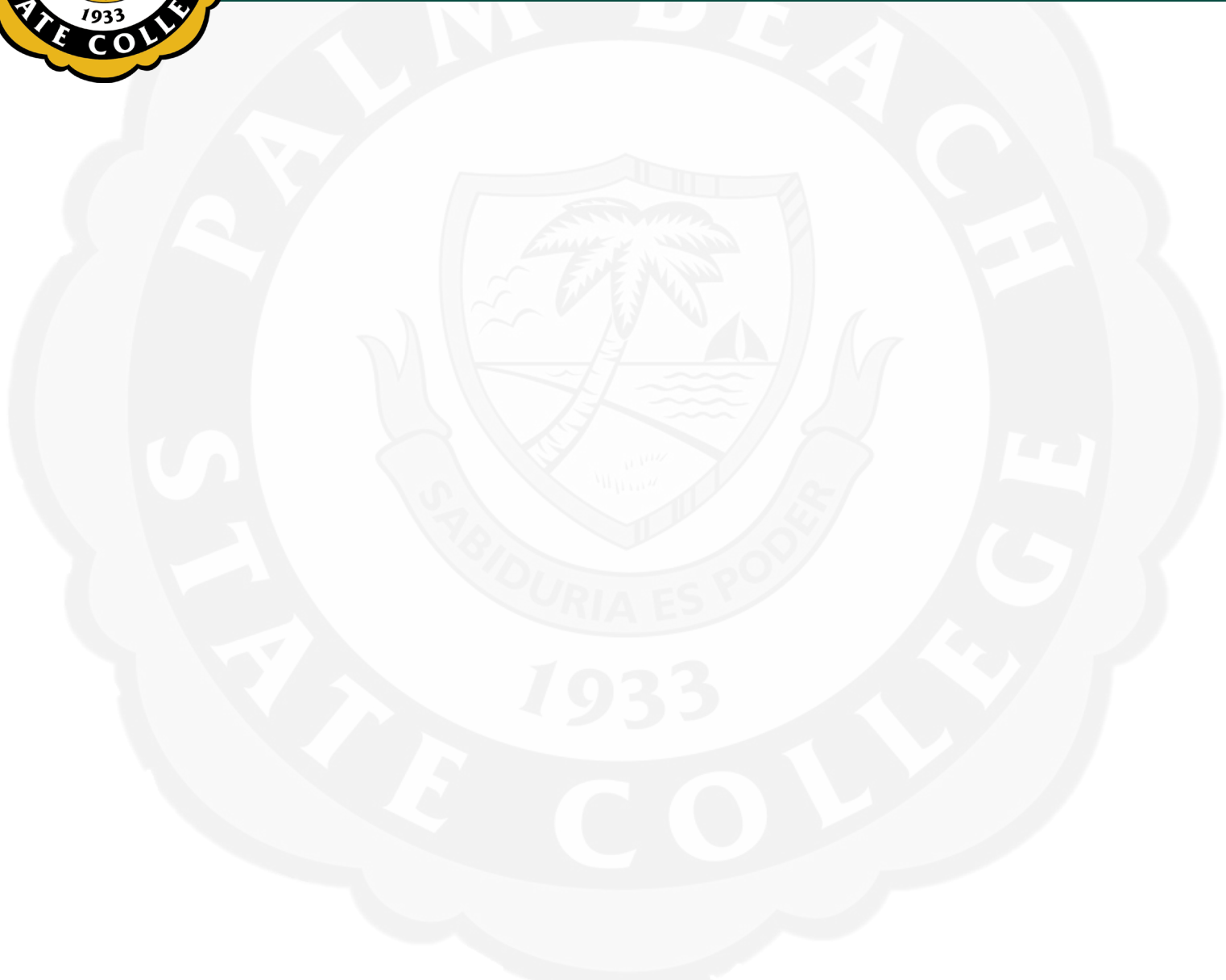


SB 7016 – Health Care

- “Live Healthy” Act: comprehensive bill to bolster Florida’s health care workforce, broaden access to health care and enhance training opportunities and health care services in rural areas, among other aspects.
- Related to colleges:
 - Expands eligibility in the **LINE** (Linking Education to Nursing) program, to include independent schools, colleges, or universities with an accredited nursing program that is located in Florida and is licensed by the Commission for Independent Education.
 - Increases the passage rate for the Nursing License Examination, from 70 percent to 75 percent, that is required for LPN, associate of science in nursing, and bachelor of science in nursing programs to participate in the LINE Fund.
 - **PBSC’s passage rates for CAN and RN are 90% and higher (LPN = 100%).**



Questions?





Palm Beach State College District Board of Trustees Meeting

October 15, 2024

KNOWLEDGE IS
FOREVER



PALM BEACH STATE COLLEGE

**Palm Beach State College
District Board of Trustees Meeting**



Annual Waiver and Exemption Report

Mr. James Duffie

Vice President, Finance and Administration

October 15, 2024



2024 Waivers and Exemptions Recap

2024 Waivers vs. Exemptions

- Booked vs. Non-Booked: revenue/expense
- Terminology: same effect with respect to the student/customer
- Accounting differences

Mainly Legislative Mandates and Allowances

- Statutory notations on report
- Some are provided locally
 - Space available
 - Uniform processes and procedures for eligibility



2024 Waivers and Exemptions Recap

Exemptions for 2024

Total: \$7,545,393 (\$6,978,920 + \$566,473)

Top 3 items:

- Dual Enrollment: \$4,120,694
(net \$1,579,582 after \$2,541,112 in revenue)
- Apprenticeship: \$2,114,311
- “54” FTE Exemptions: \$566,473



2024 Waivers and Exemptions Recap

EXEMPTIONS:	
54 FTE Exemption Authority (Maximum of 54 FTE or 1% of Total FTE)	§ 1009.25(2), F.S.
Tuition only, do not include fees	FTE check:
Out-of-State Fees	78.97
FCS institution student fees per F.S. 1009.23	(Max of: 165.625 FTE)
TOTAL 54 FTE or 1% FTE EXEMPTION	
Dual Enrollment (Provide additional information in working space below)	§ 1009.25(1)(a), F.S.
Apprenticeship	§ 1009.25(1)(b), F.S.
Custody of Dept. of Children and Families	§ 1009.25(1)(c), F.S.
Custody of a Relative/Non-Relative	§ 1009.25(1)(c), F.S.
Reunited With Parent	§ 1009.25(1)(c), F.S.
Adopted from Dept. of Children and Family Services after 05/05/1997	§ 1009.25(1)(c), F.S.
Welfare Transition Program	§ 1009.25(1)(d), F.S.
Homeless	§ 1009.25(1)(e), F.S.
Child Protection and Child Welfare Personnel	§ 1009.25(1)(g), F.S.
Children or Spouses of Law Enforcement, Correctional, or Probation Officer	§ 112.19(3), F.S.
Children or Spouses of Firefighters	§ 112.191(3), F.S.
Children or Spouses of Emergency Medical Technicians and Paramedics	§ 112.1912(2)(a), F.S.
Children or Spouses of Active Duty Military	§ 295.061(8)(a), F.S.
Children or Spouses of Florida National Guard	§ 250.34(4), F.S.
Dependents of Teachers or School Administrators	§ 112.1915(3)(d), F.S.



2024 Waivers and Exemptions Recap

Waivers for 2024

Total: \$2,225,307

Top 3 items:

- Out of State Fees for FL HS Grad: \$1,587,972
- Out of State Fees for Honorably Discharged Veterans: \$434,179
- College Employees and Dependents: \$103,856

Total Waivers and Exemptions: \$7,229,588

Total is Net of Dual Enrollment Revenue of \$2,541,112



2024 Waivers and Exemptions Recap

WAIVERS:

8 Percent Workforce Developmental Education	§ 1009.26(1), F.S./G.A.A. Proviso
College Employees or their Dependents	§ 1009.26(1), F.S.
Purple Hearts	§ 1009.26(8), F.S.
Certain Classroom Teachers	§ 1009.26(10), F.S.
State Employee Waivers	§ 1009.265, F.S.
Wrongfully Incarcerated Persons	§ 961.06(1)(b), F.S.
Spouses of Deceased State Employees	§§ 1009.26(7), 440.16(1)(c), F.S.
Linkage Institutes	§ 288.8175(5), F.S.
Disabled Veterans	§ 295.011, F.S.
Supervise Interns for State University	§ 1009.26(2), F.S.
\$10,000 Degree Waiver	§ 1009.26(11), F.S.
Out of State Fees Non-Florida Resident FL High School Graduate	§ 1009.26(12), F.S.
Out of State Fees Honorably Discharged Veteran	§ 1009.26(13), F.S.
Out of State Fees Active Duty Member of Armed Forces of the U.S.	§ 1009.26(14), F.S.
Active Duty Member of Armed Forces of the U.S. using military tuition assistance	§ 1009.26(15), F.S.
Out of State Fees Hurricane Impacted Enrollment	§ 1009.26(16), F.S.
Transcript Fee – Active Duty Member of Armed Forces of the U.S., Honorably Discharged Veteran, and their Children/Spouse	§ 1009.26(17), F.S.
Non-Florida Resident who is an Intercollegiate Student Athlete on Scholarship Paying In-state Fees	§ 1009.26(21), F.S.
Child or Spouse of Florida National Guard Member Killed in the Line of Duty	§ 295.01,(2)(a)F.S.
Persons Age 60 or Older	§ 1009.26(4), F.S.
Other Waivers (Please itemize details in working space below)	§ 1009.26(1), F.S.



2024 Waivers and Exemptions Recap

Soft Costs

- Implementation: Procedures
- Eligibility: Per Statutes/Rules
- Processing: High Touch Points/Effort



Palm Beach State College District Board of Trustees Meeting

October 15, 2024

KNOWLEDGE IS
FOREVER



PALM BEACH STATE COLLEGE

Palm Beach State College District Board of Trustees Meeting



Amendments and Repeals to Section 1: DBOT Policies

Geovanni Denis, Esq

Associate General Counsel

October 15, 2024



Overview

- Amendment of DBOT Policy 6Hx-18-1.24: “Public Records”
- Repeal of DBOT Policy 6Hx-18-1.25: “Public Records Retention and Disposition”



Summary - 6Hx-18-1.24 & 6Hx-18-1.25

- Amended Policy 6Hx-18-1.24, “Public Records,” will integrate Repealed Policy 6Hx-18-1.25, “Public Records Retention and Disposition.”
 - This will create a single public records policy that includes the creation, management, retention, and disposition of records.
- Update to reference applicable Florida Department of State Records Retention Schedule (GS 1 and 5).
- Formally delineates that the V.P. of Student Services, and the General Counsel are to coordinate the release of records.



Palm Beach State College District Board of Trustees Meeting

October 15, 2024

KNOWLEDGE IS
FOREVER



**Palm Beach State College
District Board of Trustees Meeting**



**PBSC Marketing, Branding and Wayfinding
at the Palm Beach Gardens Campus
for the SoFi User Experience**

**Ms. Angela Harrington
Chief Communications and Public Affairs Officer**

October 15, 2024



Overview





3D Letters



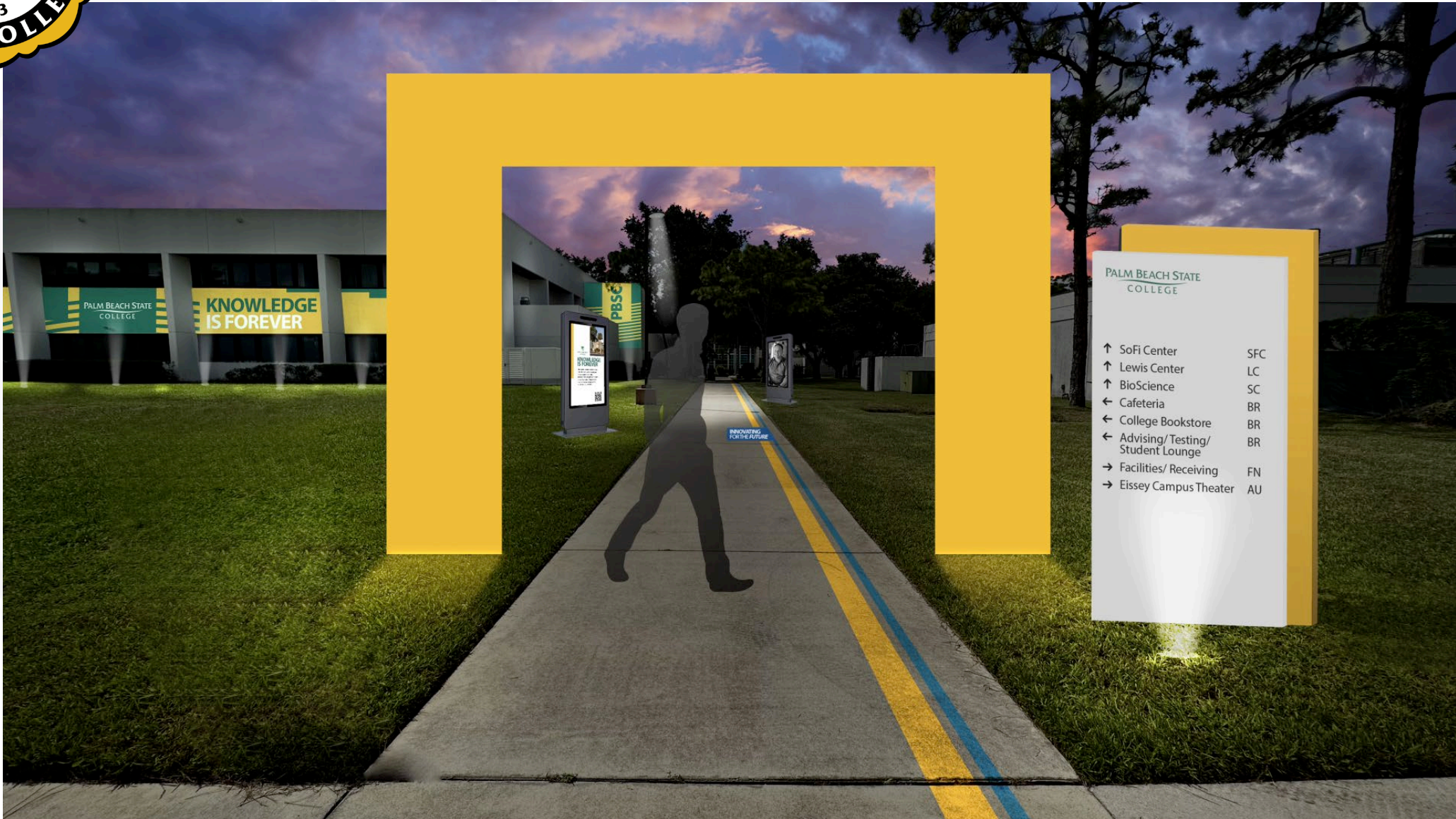


Parking Lot – Light Boxes





LED Archway



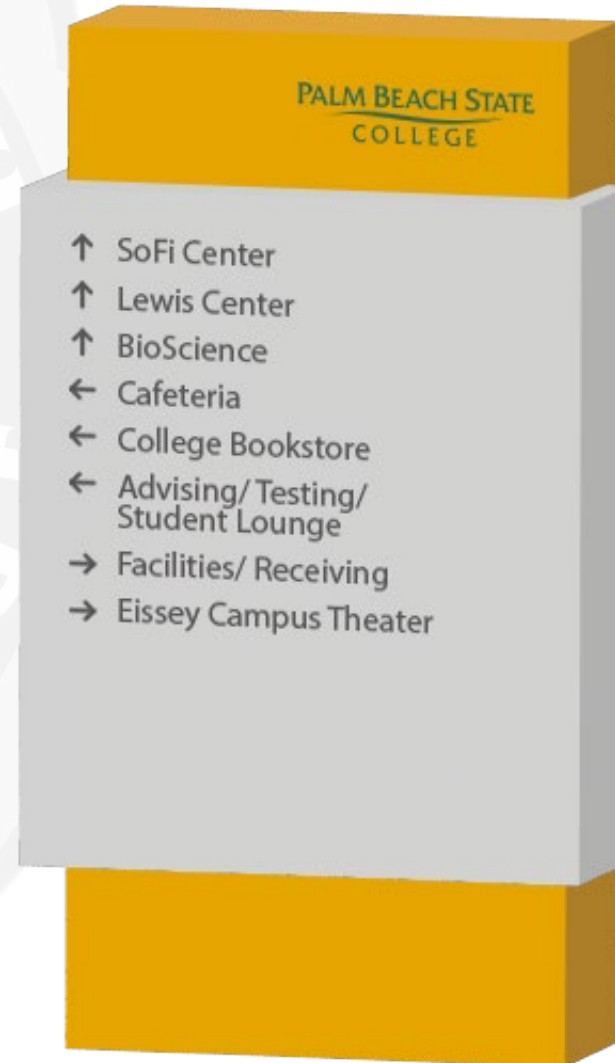


BioScience Vinyl Wrap





Light Pole Banners & Directional Sign





Fence Wrapping Designs





Palm Beach State College District Board of Trustees Meeting

October 15, 2024

KNOWLEDGE IS
FOREVER



PALM BEACH STATE COLLEGE

**Palm Beach State College
District Board of Trustees Meeting**



**EASEMENT IMPROVEMENT AND
MAINTENANCE AGREEMENT**

Geovanni J. Denis, Esq.

Associate General Counsel

October 15, 2024



Purpose of Agreement

- The agreement represents a collaborative effort between Palm Beach State College and TMRW Sports, Inc.;
- Establishes responsibilities for improvements and maintenance; and
- Enhances safety and aesthetics of ingress and egress areas.





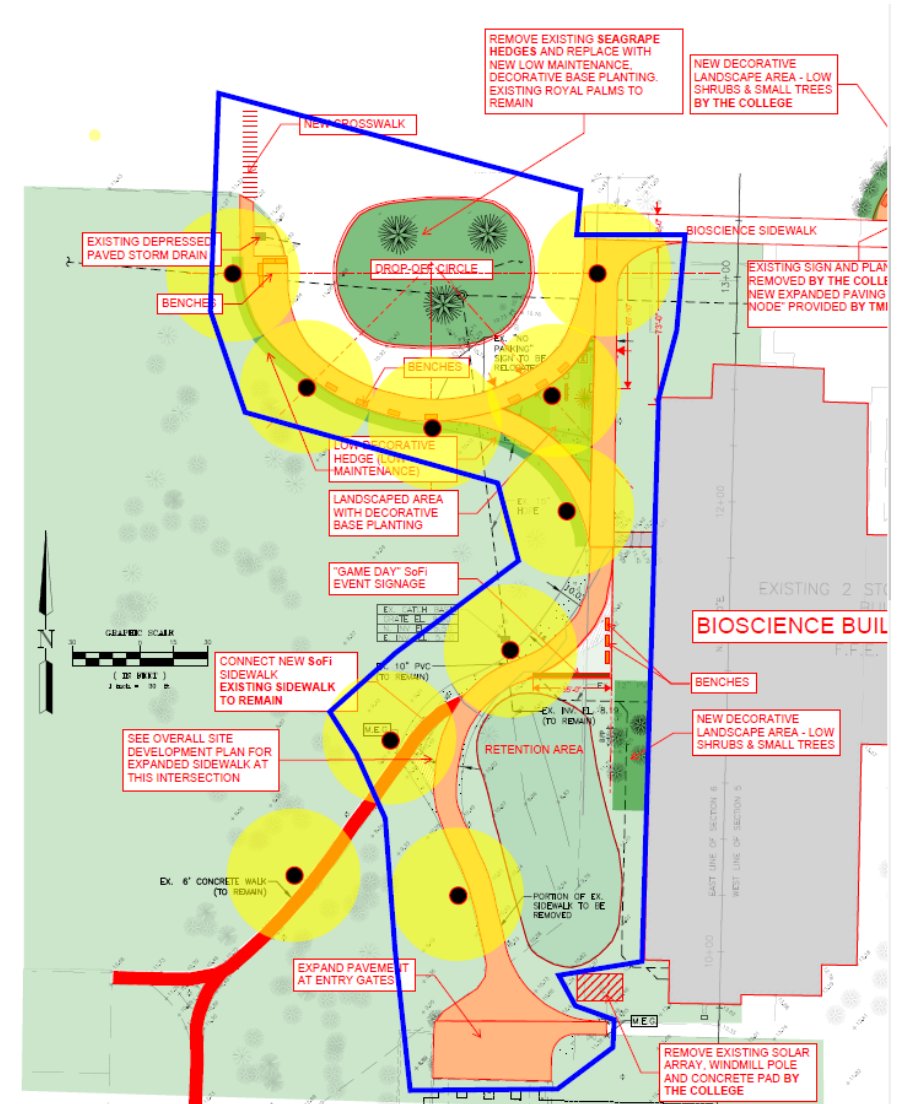
Obligations by PBSC

- **Re-sealing and Re-striping**
 - Blue and Grey parking lots.
- **Lighting Enhancements – Grey Lot, Blue Lot and Life Science Walkway**
 - Replace fixtures on existing poles; and
 - Install new light poles and fixtures.
- **Landscaping**
 - Continue maintenance at current PBSC standards
 - Clear and maintain intersection of Bioscience and Lewis Center sidewalks
 - (Installation of landscaping covered in next slide).



Obligations by TMRW Sports, Inc.

- **Design and Engineering**
 - Prepare necessary permitting documents.
- **Lighting**
 - Remove & dispose existing light poles; and
 - Install direct burial light poles and fixtures at the locations circled in yellow.
- **Sidewalk Expansion**
 - Replace 6-foot sidewalk with 10-foot sidewalk; and
 - Expand paved area at entry gates.
- **Paving and Crosswalks**
 - Expand paving at drop-off circle; and
 - Construct new crosswalk near drop-off circle.
- **Landscaping and Signage**
 - Supplemental landscape maintenance prior to TMRW hosted events;
 - Remove sea grapes from drop-off circle, and landscape with low maintenance base planting;
 - Install and maintain low-maintenance hedging along path as indicated;
 - Installation of landscape at the intersection of the Bioscience and Lewis Center sidewalks;
 - Remove and dispose various structures;
 - Add signage and benches as indicated;
 - Maintenance of hardscaped structures; and
 - Trash removal and general clean-up following TMRW hosted events.





Palm Beach State College District Board of Trustees Meeting

October 15, 2024

KNOWLEDGE IS
FOREVER



PALM BEACH STATE COLLEGE



2nd Annual Emerald Torch Awards Gala

PALM BEACH STATE COLLEGE AND
THE FOUNDATION FOR PALM BEACH STATE COLLEGE

EMERALD *Torch Awards Gala*

SAT | NOV | 16 | 2024 | 6PM

PALM BEACH STATE COLLEGE
THE COMMONS AREA | 4200 SOUTH CONGRESS AVENUE
LAKE WORTH, FL 33461

INDIVIDUAL TICKET \$300 | TABLE SPONSOR \$3,000

For more details, please contact:
PBSTorchGala@palmbeachstate.edu

PBSC.edu/TorchAWARDS

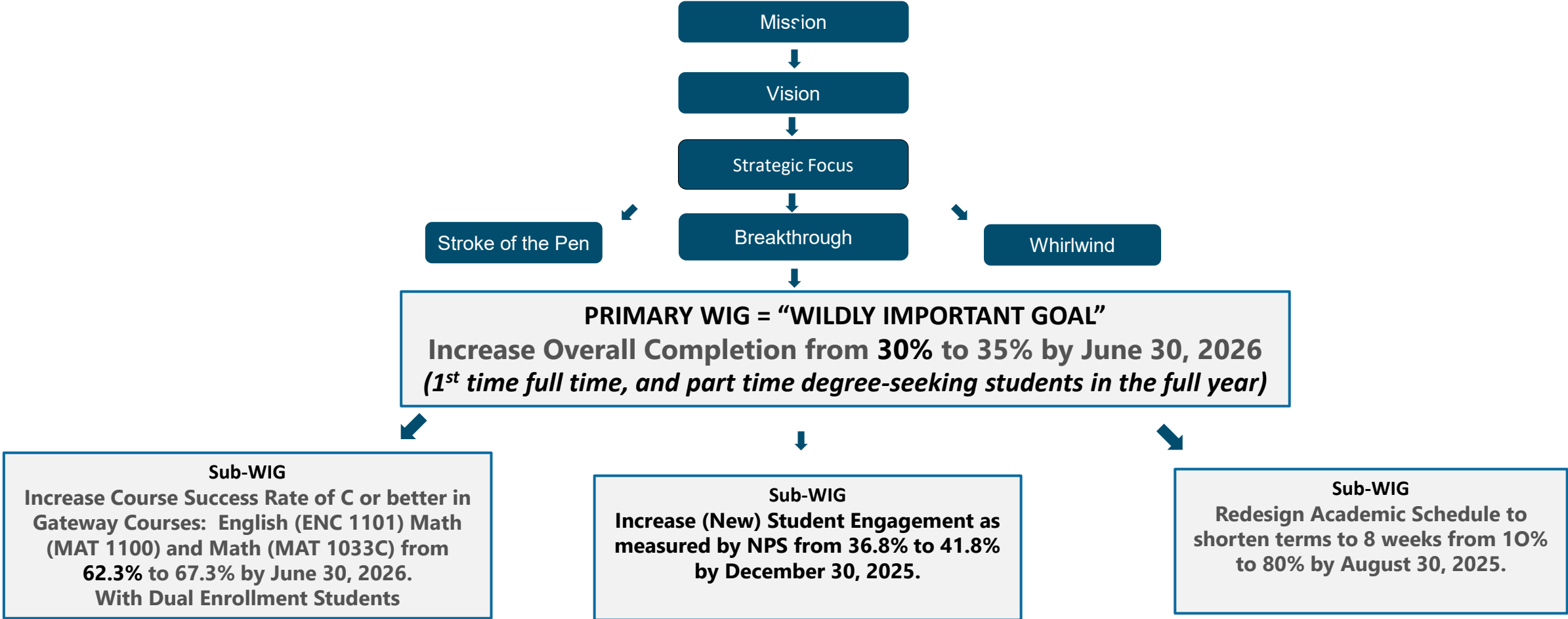


The 4 Disciplines of
Execution[®]

The 4DX System



Strategy Map - Palm Beach State College



4DX in a Nutshell



Discipline 1

Focus



Discipline 2

Leverage



Discipline 3

Engagement



Discipline 4

Accountability

